

197

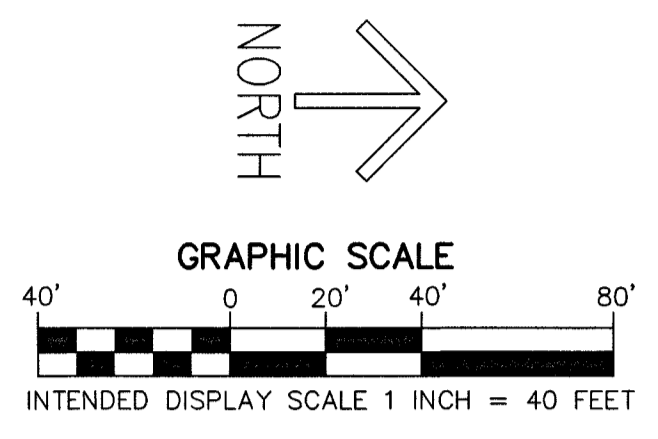
POLIMIX

A PORTION OF THE SOUTHWEST ONE QUARTER OF SECTION 25, TOWNSHIP 42 SOUTH, RANGE 42 EAST, CITY OF RIVIERA BEACH, PALM BEACH COUNTY, FLORIDA

THIS INSTRUMENT PREPARED BY
DAVID P. LINDLEY
OF
CAULFIELD and WHEELER, INC.
SURVEYORS - ENGINEERS - PLANNERS
7900 GLADES ROAD, SUITE 100
BOCA RATON, FLORIDA 33434 - (561)392-1991

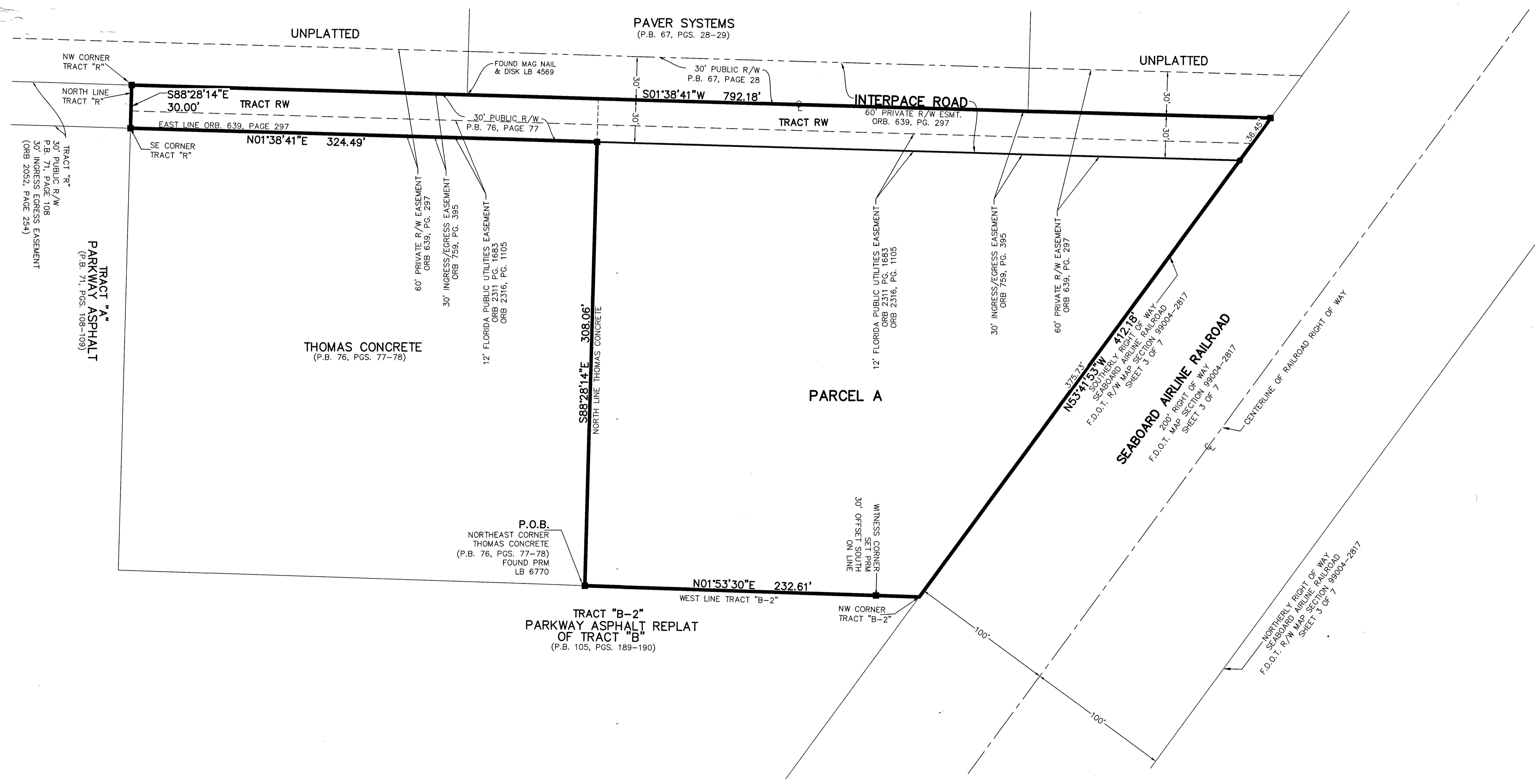
TABULAR DATA

NAME	SQUARE FEET	ACRES
PARCEL A	104,887	2.408
TRACT RW	23,444	0.538
TOTAL	128,331	2.946



SHEET 3 OF 3

B



- #### LEGEND/ABBREVIATIONS
- ⊙ - CENTERLINE
 - BLVD - BOULEVARD
 - F.D.O.T. - FLORIDA DEPARTMENT OF TRANSPORTATION
 - LB - LICENSED BUSINESS
 - NAD - NORTH AMERICAN DATUM
 - ORB - OFFICIAL RECORD BOOK
 - P.B. - PLAT BOOK
 - PG./PGS. - PAGE/PAGES
 - R/W - RIGHT-OF-WAY
 - NPBCID - NORTHERN PALM BEACH COUNTY IMPROVEMENT DISTRICT
 - N - NOTHING WHEN USED WITH COORDINATES
 - E - EASTING WHEN USED WITH COORDINATES
 - UE - UTILITY EASEMENT
 - ESMT. - EASEMENT
 - SQ FT - SQUARE FEET
 - - SET IRON ROD AND CAP STAMPED "LB 3591"
 - PRM - INDICATES SET 4"x4"x24" CONCRETE PERMANENT REFERENCE MONUMENT WITH ALUMINUM DISK STAMPED "PRM LB 3591", UNLESS OTHERWISE NOTED

NOTES

COORDINATES, BEARINGS AND DISTANCES

COORDINATES SHOWN ARE GRID
 DATUM = NAD 83 (1990 ADJUSTMENT)
 ZONE = FLORIDA EAST
 LINEAR UNIT = US SURVEY FEET
 COORDINATE SYSTEM 1983 STATE PLANE
 TRANSVERSE MERCATOR PROJECTION
 ALL DISTANCES ARE GROUND, UNLESS NOTED OTHERWISE
 SCALE FACTOR = 1.000036635
 GROUND DISTANCE X SCALE FACTOR = GRID DISTANCE
 BEARINGS AS SHOWN HEREON ARE GRID DATUM,
 NAD 83 (1990 ADJUSTMENT), FLORIDA EAST ZONE.